

APPENDIX

1 List of Figures

Fig.1-1. Site location
Fig.1-2. Tourist attractions
Fig.1-3. Summary of “Great Fire of Changsha”
Fig.1-4. Staff recorded burnt ancient buildings
Fig.1-5. Waiting for the distribution of daily necessities
Fig.1-6. Homeless child
Fig.1-7. The building was being burned down
Fig.1-8. The building was being burned down
Fig.1-9. The building was being burned down

Fig.3-1. Aerial view of case study I
Fig.3-2. Aerial view of case study II

Fig.5-1. Analysis of road conditions
Fig.5-2. Analysis of public transportation
Fig.5-2. Analysis of surrounding structures
Fig.5-2. Analysis of pedestrian flow
Fig.5-2. Basic Information about the Site
Fig.5-3. Analysis of site topography
Fig.5-4. Analysis of Indoor Space
Fig.5-5. Analysis of existing plants
Fig.5-6. Analysis of site pavement
Fig.5-7. Analysis of project section view

Fig.6-1. Design concept
Fig.6-2. Design strategy
Fig.6-3. Bubble diagram
Fig.6-4. Bubble diagram
Fig.6-5. Road system
Fig.6-4. Sculpture construction
Fig.6-5. Planting beds
Fig.6-6. Trees position
Fig.6-7. Main plant applications
Fig.6-9. Pavement design solutions
Fig.6-8. Drainage system

Fig.7-1. Inspiration of the sculpture
Fig.7-2. Material of the sculpture

Fig.7-3. Water feature
Fig.7-4. Courtyard part of the sculpture
Fig.7-5. Section of sculpture square
Fig.7-6. Visualization of the sculpture square
Fig.7-7. The section of entrance area
Fig.7-8. The section of entrance area
Fig.7-9. Visualization of the sculpture square
Fig.7-10. Detail of the historical education area
Fig.7-10. Visualization of the historical education area
Fig.7-11. Detail of the sitting area
Fig.7-12. Visualization of the sitting area

Fig.8-1. Visualization of whole project

2 References

[1] Wang Ran. Research on the Space of Urban Memorial Parks: A Case Study of Haidi Memorial Park in Xiamen [J]. Architecture Engineering Technology and Design, 2018, 000(016):1016-1017.

[2] Chen Shujie. Landscape Design and Research of Memorial Parks [D]. Xi'an University of

Architecture and Technology, 2009. DOI: 10.7666/d.d195093.

[3] Ma Rui. Research on Landscape Design of Memorial Parks: Taking the Design of Mengzi Zhaozhong Temple Park as an Example [M]. Kunming University of Science and Technology, 2009.

[4] Chen Xiaogang, Liu Keke. Research on the Spatial Narrative Expression of Urban Memorial Parks Based on Visual Perception [J]. 2024(25):90-95.

[5] Fan Bei, Zhang Wen, Zhang Jie, et al. The Application of Sculpture Elements in the Landscape of Memorial Parks: Taking Zhaotuo Park in Shijiazhuang as an Example [J]. Forestry and Ecological Sciences, 2015, 30(2):211-214.

[6] Xie Yu. Landscape Planning and Design of Contemporary Urban Memorial Parks with Regional Humanities and Landscape Integration [D]. Chongqing University, 2014.

[7] Liu Luzhang. Research on the Application of Semantic Expression of Memorial Symbols in the Planning and Design of Memorial Parks [D]. Fujian Agriculture and Forestry University, 2012.

[8] Ma Rui. Research on Landscape Design of Memorial Parks [D]. Kunming University of Science and Technology, 2009. (Note: This is a duplicate of reference [3], so it may be omitted in a final list to avoid redundancy.)

[9] Meng Xiangzhuang, Liu Chang. Research on the Design of Comprehensive Parks with Memorial Landscapes [J]. Shanxi Architecture, 2013, 39(8):3. DOI: CNKI:SUN:JZSX.0.2013-08-093.

[10] Wu Yuqiang, Wang Zewen, Fan Wubo. Expression and Design of Landscape Elements in Memorial Parks [J]. Chinese Journal of Tropical Agriculture, 2019, 39(9):7. DOI: CNKI:SUN:RDNK.0.2019-09-013.

[11] Wang Juan, Long Mingdong. Research on Ancient Buildings of Tianxin Pavilion in Changsha [J]. Lantai World: Early Edition, 2013(8):2. DOI: CNKI:SUN:SHIJ.0.2013-22-109.

[12] Wen Jie, Shen Shouyun, Hu Heng. Discussion on the Protection and Development of the Cultural Landscape of Tianxin Pavilion in Changsha [J]. Southern Horticulture, 2008, 19(1):37-39. DOI: 10.3969/j.issn.1674-5868.2008.01.017.

[13] Hu Yehua. Cognitive Survey and Integration Research on Heritage Elements in the Historic Urban Area of Changsha [D]. Hunan Normal University, 2013.

[14] Long Ling, Liu Su. Discussion on the Protection and Utilization of Tianxin Pavilion in the Ancient City of Changsha [J]. South Architecture, 2004, 000(005):75-77.

[15] Gao Jiehua, Li Dexi. Cultural Tour of Ancient Chinese Architecture: Hunan & Hubei [M]. Intellectual Property Publishing House, 2002.

[16] Ge Junyang, Wang Sheng, et al. Awakening the "Half-Asleep" Places in Old City Renewal through Urban Design at the Regulatory Planning Level: Taking the Area Around Tianxin Pavilion in Changsha as an Example [C]//China Urban Science Research Society. China Urban Science Research Society, 2016.

[17] Feng Yong, Peng Rui. Discussion on the Post-Disaster Reconstruction of Cities from the "Wenxi Fire" in Changsha [J]. Planners, 2006, 22(9):2. DOI: 10.3969/j.issn.1006-0022.2006.09.031.

[18] Huang Jialai. Wenxi Fire: The Ancient City of Changsha Was Reduced to Ashes [J]. Archives Timespace, 2005.

[19] Zou Yexin. Research on the Characteristics of Residential Buildings Rebuilt in Changsha Urban Area After the Wenxi Fire [D]. Hunan University, 2021.

[20] Zhang Ning. Wenxi Fire During the War of Resistance Against Japan [J]. 2014. (Note: This reference lacks a specific journal title and pagination, so it may need further clarification or omission in a formal academic work)

3 Posters

Memorial Park of An Urban Catastrophe in Changsha City

This project, "Memorial Park of An Urban Catastrophe in Changsha City," is designed based on real historical events. The main goal is to build a high-quality landscape and commemorative park that meets the needs, to commemorate the deceased, feel the pain of disasters, cherish the present, and promote the perception of peace. The project conducted site analysis before design, combined with research and analysis of the internal and external environment of the site, to grasp the main contradictions, use its advantages to avoid its weaknesses and connect with history, and better integrate with the city.

Commemorative parks mainly bring about emotional changes, with the main space being the reproduction of historical scenes and the corresponding expression of emotions. Other spaces, while meeting the basic needs of park functions, help users gradually lay the groundwork for emotions, briefly leaving the busy city and entering a commemorative space.

The construction of sculptures is designed in connection with elements related to historical events, based on spatial size, terrain characteristics, and surrounding environment to create different ways of thinking. Perhaps due to factors such as time, location, angle, season, etc., different scenes may be discovered to gain different insights.



1..The Site Location of Project

Changsha City
Tianxin District

2.The Process of Historical Event



Due to World War II, the entire city was burned down and suffered a large number of casualties among residents, as well as damage to property and culture, which is seen as the historical background.

Changsha City

3. Reasons and Goals



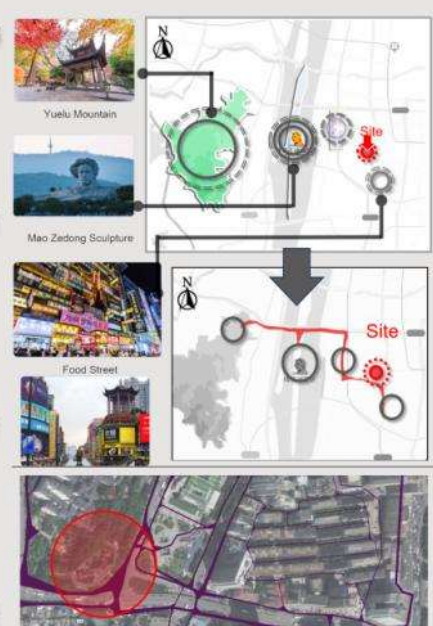
4.Analysis of Traffic System



5.Analysis of Surrounding Structures



6.Analysis of Pedestrian Flow



LI SEN

70563842@qq.com

DEPARTMENT OF GARDEN AND OPEN SPACE DESIGN

SUPERVISOR: ALMÁSI BALÁZS

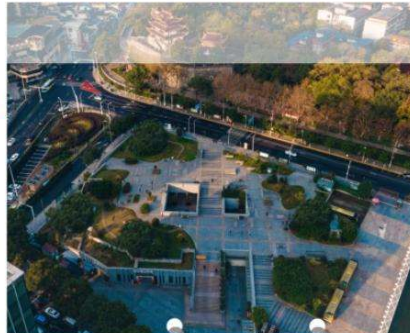
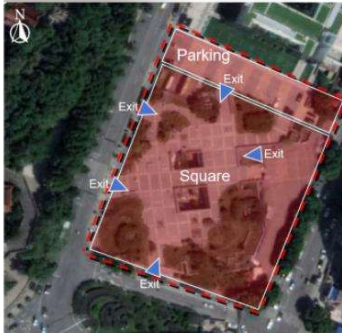


INSTITUTE OF LANDSCAPE ARCHITECTURE, URBAN PLANNING AND GARDEN ART
LANDSCAPE ARCHITECTURE AND GARDEN DESIGN MA PROGRAMME

Memorial Park of An Urban Catastrophe in Changsha City

2

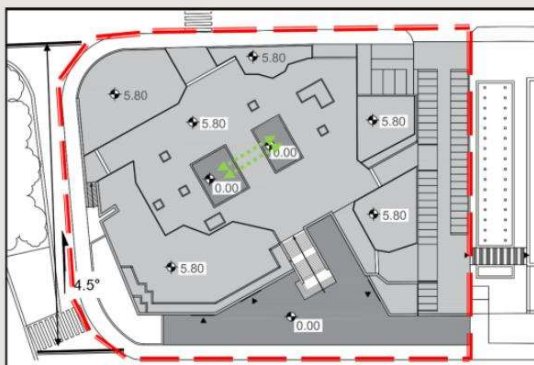
1. Introduction to Basic Information about the Site



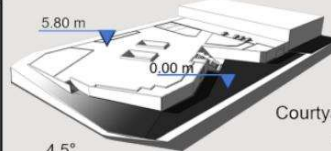
Currently, this site consists of a 1.5-hectare public plaza and a parking area. It boasts smooth access with no particular public facilities in place.

The pedestrian traffic is low, with only a few people stopping by for a rest. However, it is noteworthy that the site features a unique terrain, roughly divided into two sections of the plaza with a height difference of approximately 5 meters. The upper section comprises normal ground level and a rooftop garden, while the lower section is an open plaza.

2. Analysis of Site Topography



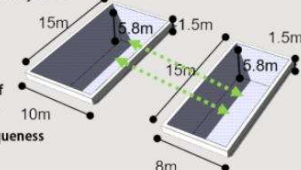
Site model:



By designing in accordance with this unique environment, the combination of space and perspective can enhance user experience and add to the project's uniqueness and appreciation value.

The topography of the site, as depicted in the diagram, features a height difference of 5.8 meters due to an overall slope of approximately 4.5 degrees. This height difference has been utilized to create indoor spaces. Notably, this spatial design results in two open-air courtyards, allowing views from the inside out.

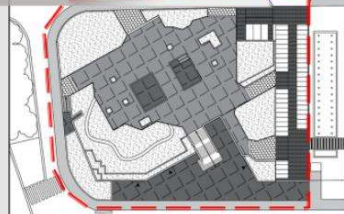
Courtyard:



3. Analysis of Existing Plants

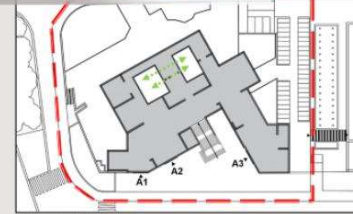


4. Analysis of Site Pavement



The area of green space is a quarter of the total area 1/4. The paving of the site is not beneficial to rainwater infiltration, and not durable.

5. Analysis of Indoor Space

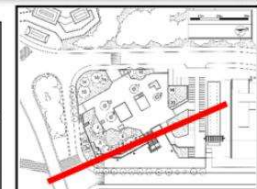
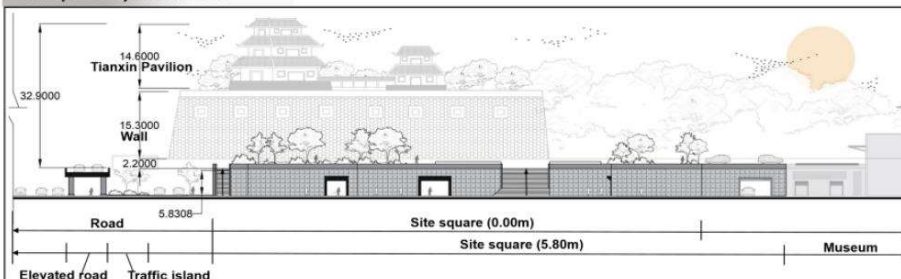


Antique and vintage shop:



There is only one floor of the shop, it occupies half of the entire site. So when designing, attention should be paid to the roof garden part.

6. Analysis of Project Section View



1. The visual impact created by the height difference;
2. The seamless integration of historical context;
3. The uniqueness brought by the site's inherent special terrain.



LI SEN
70538428@qq.com

DEPARTMENT OF GARDEN AND OPEN SPACE DESIGN

SUPERVISOR: ALMASI BALAZS



INSTITUTE OF LANDSCAPE ARCHITECTURE, URBAN PLANNING AND GARDEN ART
LANDSCAPE ARCHITECTURE AND GARDEN DESIGN VIA PROGRAMME

Memorial Park of An Urban Catastrophe in Changsha City

3

1.Design Concept



Use elements related to historical events to create a sense of atmosphere and focus on human emotions



2.Design Strategy

One typical type of park has an obvious focus and a clear and simple structure.

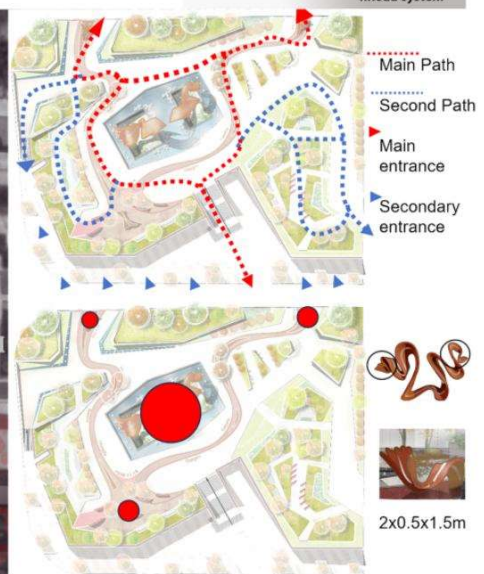
It's easy to get attention and create an atmosphere which is suitable.



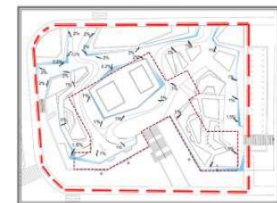
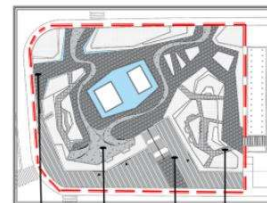
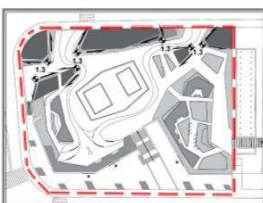
3. Master Plan



4.Road system



4.Plants Design



The thickness of the soil:
 300cm Any plants
 200cm Except for deep-rooted plants
 100cm Only for perennial, annual or lawn

● Roof garden tree
 Prunus cerasifera
 Quercus ilex
 Malus halliana
 ● Remains
 Hippocrepis retusa
 Prunus cerasifera

Water-tolerant, arboreal, durability

Reference
 Water pool Depth: 100-200cm

5. Plants Strategy

Plant configuration is as follows. It indicates the color changes of the trees throughout the year and the main colors of the annual and perennial, which are in line with the theme and help improve the atmosphere and integration of the commemorative park.



LI SEN
 70633641@qq.com

DEPARTMENT OF GARDEN AND OPEN SPACE DESIGN SUPERVISOR: ALMASI BALAZS



INSTITUTE OF LANDSCAPE ARCHITECTURE, URBAN PLANNING AND GARDEN ART
 LANDSCAPE ARCHITECTURE AND GARDEN DESIGN WIA PROGRAMME

Memorial Park of An Urban Catastrophe in Changsha City

4



1. The Inspiration of Sculpture

The design of the sculpture aims to connect visitors to "The Great Fire in Changsha City" for mourning and contemplation, while also creating beautiful landscapes in different spaces.

Association with catastrophe
 - Shape - wave
 From all angles, the waves
 - Color - Red
 Red is the representative color of flames
 - Size - Huge
 The fire once spread to the entire city
 - Function
 Provide a strong atmosphere and emotions

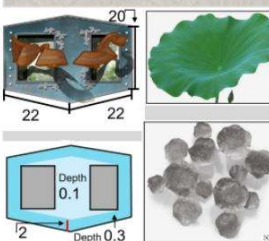
Association and integration with design
 Same design elements
 Curved and not pavement with Broken Line flowerbed
 The existing sculpture with Broken Line water feature
 Plantation with red as the main color
 Adaptability of sculpture with site
 Sculpture runs through the space and linear
 Sculpture associate with building



2. Water Feature below the Sculpture - Peace and Tranquility

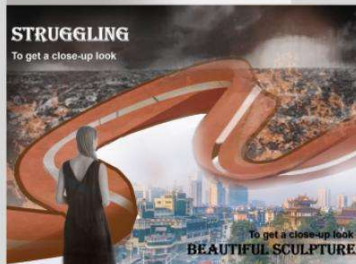


To observe reflection in water
PEACEFUL



The design of this pool has two functions: one is for safety protection, and the other is to express special symbolic connotations and aesthetic.

3. Material of the Sculpture - Fire and Disaster



STRUGGLING
 To get a close-up look

To get a close-up look
BEAUTIFUL SCULPTURE

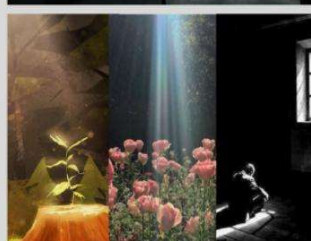


The sculpture is also interspersed with Aluminum alloy, a material that allows you to blend in with the sculpture through mirror reflection when standing in front of it

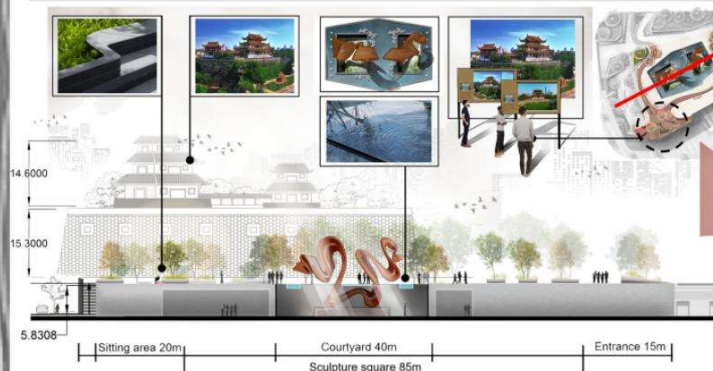
4. The Sculpture of Courtyard Part - Hope and Renewal



HOPE OR HOPELESS
 Intense light and different spaces



Looking up at the sculptures extending from the courtyard gives people a hopeful feeling.



Monumental Sculpture Square



LI SEN

70563842@qq.com

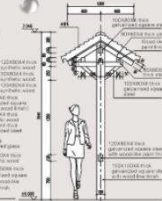
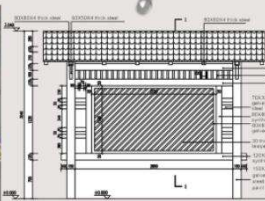
DEPARTMENT OF GARDEN AND OPEN SPACE DESIGN SUPERVISOR: ALMASI BALAZS



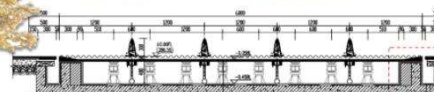
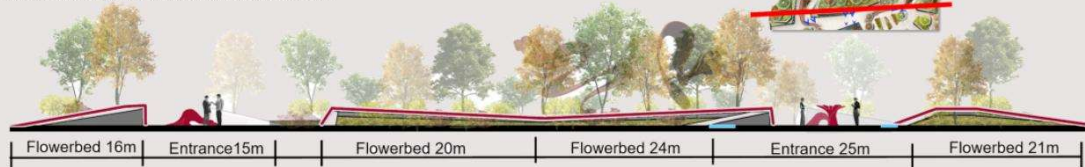
INSTITUTE OF LANDSCAPE ARCHITECTURE, URBAN PLANNING AND GARDEN ART
 LANDSCAPE ARCHITECTURE AND GARDEN DESIGN WA PROGRAMME

Memorial Park of An Urban Catastrophe in Changsha City

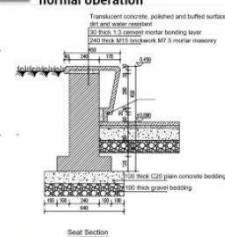
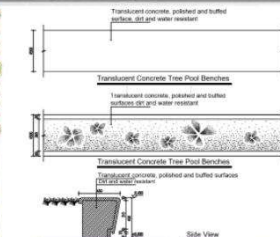
5



The Sitting area is the area that connects the Chinese Characters Museum. Considering that employees and visitors will enter the park from the museum, the sitting area also serves as a buffer zone, allowing visitors to rest and gain emotional preparation. The area has been designed with many features, including beautiful plant arrangements for tourists to enjoy and engage in activities such as conversation, rest, and entertainment.



The engineering drawing provides a detailed introduction to the design of the entrance water feature facility, which combines durability and permeability to ensure the normal operation



The Sitting area is the area that connects the Chinese Characters Museum. Considering that employees and visitors will enter the park from the museum, the sitting area also serves as a buffer zone, allowing visitors to rest and gain emotional preparation. The area has been designed with many features, including beautiful plant arrangements for tourists to enjoy and engage in activities such as conversation, rest, and entertainment.

The design of park lighting should blend seamlessly with the environment, creating a harmonious landscape effect. Designers need to fully consider the park's natural setting, cultural landscape, and visitors' viewing needs, utilizing design elements such as lighting layout, height, and angle to create an illuminating effect that coordinates with the park's environment. For instance, in densely wooded areas, floodlights can be used to illuminate trees, highlighting their contours and textures; in waterscape areas, underwater lights or shoreline lights can be employed to illuminate the water surface, creating a shimmering visual effect.



LI SEN
70563942@qq.com

DEPARTMENT OF GARDEN AND OPEN SPACE DESIGN SUPERVISOR: ALMASI BALAZS

MATE

INSTITUTE OF LANDSCAPE ARCHITECTURE, URBAN PLANNING AND GARDEN ART
LANDSCAPE ARCHITECTURE AND GARDEN DESIGN WIA PROGRAMME